

AHIPA09
Workshop on Applications of High Intensity Proton Accelerators
October 19 -21, 2009
Fermi National Accelerator Laboratory · Batavia, Illinois

General Information

Secretariat

The Secretariat will be located in the southwest alcove of the Cafeteria on the Atrium level of Wilson Hall and will be open during Fermilab's regular business hours. Registration will begin at 7:30 a.m. on Monday, October 19, 2009.

Message Center

Messages for participants may be left with the Meeting Secretariat at 630-840-4548 during the hours the Secretariat is open. In the event of an emergency and after the Secretariat closes, contact the Fermilab Communications Center (ComCenter) at 630-840-3000. They will see that messages are conveyed to the Meeting Secretariat for transmittal to the participant. Telefaxes may also be sent to the Communications Center at 630-840-4343. Please include the Meeting title (AHIPA09) and the name of the participant on the fax cover sheet.

Conference Cocktails and Dinner

Cocktails and Dinner will be held on Monday evening, October 19, 2009, at Cantigny Park in the Le Jardin Room of the Visitors Center. Cocktails will be served from 6:30 p.m. with dinner starting at 7:30 p.m. Participant dinner tickets are \$60.00 and companion dinner tickets are \$80.00. Tickets must be purchased at the Secretariat during registration on Monday morning, October 19. Shuttle bus service for this event will be provided from Wilson Hall to Cantigny and then from Cantigny to the Holiday Inn in Naperville at the end of the dinner. None of the shuttle buses will return to Fermilab.

Conference Reception

A reception, hosted by Muons, Inc, will be held on Tuesday, October 20, 2009 in the Atrium of Wilson Hall from 6:00 p.m. to 8:00 p.m. All participants and companions are invited to attend.

Wilson Hall After-Hour Access

In order to keep the site open to the public, after-hour access to Wilson Hall through the ground floor entrances has been restricted to Fermilab employees and visitors with a **Fermilab photo ID** seven days a week from 8:00 p.m. to 6:00 a.m. The front door of Wilson Hall at the Atrium level is closed from 11:00 p.m. to 6:00 a.m.

Employees and visitors with **Fermilab ID badges** will be able to enter ground floor doors at the southwest stairwell (exterior and interior doors); the northwest and northeast handicapped doors;

and the personnel door next to the high-bay overhead door. In order to enter at these access points, hold your badge a couple inches away from the reader and the door will open.

In some cases, doors will remain unlocked to accommodate after-hours events for the public.

E-Mail Computer Terminals

An E-Mail Center has been set up on the Ground Floor, north end of Wilson Hall. There you will find PCs and a number of laptop connections. These facilities have been set up for use in checking your e-mail. Instructions for logging on to an account at your home institution and information about print queues are posted in the Center. This facility is open 24 hours a day. In addition, wireless connectivity is possible in most of Wilson Hall and in the User's Center.

Computer Security

Anyone conducting work at the Laboratory or using the Laboratory's computing resources that require Internet access must register his or her system's hardware address. To find such, go to URL: <http://www-dcn.fnal.gov/DCG-Docs/mac/> selecting the appropriate O/S.

Visitor computers brought on site may apply for a temporary DHCP address by connecting to the Fermilab network (SSID=fgz) using either a wired (Ethernet) or wireless connection. Note: the system will automatically detect fgz if configured to do so.

After filling out and submitting the Temporary DHCP Address web form, the system will be scanned and must demonstrate the same level of computer security required for all Lab machines. The easiest way to ensure a machine is secure, is to run an O/S update and/or Software update containing current security patches and virus signatures.

There are available Network 'Pix' lines (outside fnal.gov domain) located in the Email Center and in the HelpDesk office allowing individuals to connect to the network and download and install critically deemed patches from a vendor or university. This connection will not have internal access to the Fermilab network but will have access to the Internet.

Note that only those critical vulnerabilities identified on the following web page will cause a system to be denied a temporary address: <http://security.fnal.gov/CriticalVuln/index.html>

Machines with non-critical vulnerabilities (anything not on the above list) will be granted a temporary address and you will receive e-mail notification with instructions describing how to remediate the problem.

DHCP Registration

Temporary Registration

Users of unregistered computers will need to open a web browser and visit any URL to bring up the DHCP registration form. The form asks for some basic contact information and should take only about a minute to fill out. The registration process is described at:

http://computing.fnal.gov/security/registration_dhcp.html

If the system will be at Fermilab for longer than a few days, it must also be registered in the MISCOMP database, as temporary registration will only be allowed for a few days per visit. Permanent registration is accomplished as described below, and should become effective within one to two business days.

Permanent Registration

To apply for permanent registration, complete the form at:

<https://miscomp.fnal.gov/misnet/cgi/nwsvc.pl>

The system name, its IP address (if a permanent assignment has already been made), its built-in hardware address (the so-called “MAC Address”), its location, and the name, e-mail address, and phone number of the individual responsible for this machine are all required. (Computers with multiple network interfaces must register all of the built-in addresses. See <http://www-dcn.fnal.gov/DCG-Docs/mac/> for more information about determining a computer’s built-in MAC address).

To see if your system is already registered, go to:

<http://appora.fnal.gov/misnet/systemName.html> and enter its node name into the “Any System(s) by Name” query box. To change information on an already registered machine, go to:

<https://miscomp.fnal.gov/misnet/cgi/nwsvc.pl>.

If you need help determining whether the systems you use are registered, contact your General Computer Security Coordinator (GCSC). There is a list of GCSCs at:

<http://computing.fnal.gov/security/#contacts>

Wireless Network

Wireless (802.11b/g) network connectivity is possible in most of Wilson Hall and in the Village User’s Center. Your computer will need to obtain an IP address via the Laboratory’s DHCP service. Please be aware, however, of the restrictions for obtaining IP addresses via DHCP.

Although all computers must be registered in order to use the Fermilab network, visitors to the Lab may obtain temporary network access.

This temporary registration expires at midnight each day. To access the temporary registration form, simply start your web browser and request any web address. Fill in the required identification information. Your computer will then be scanned briefly for vulnerabilities, and an IP address assigned.

You will either need to reboot your computer, or restart your computer’s networking, in order to use the assigned IP address.

If your wireless driver does not successfully connect to the Fermilab 802.11b/g network, try the following configuration settings:

SSID, also known as “Network Name”, “Service Area”, “ESSID”, “WLAN Service Name”:

- Try leaving it blank for auto-detect
- Try the keywords “ANY” or “any” for auto-detect
- Use the keyword “fgz” (*not* “FGZ”)
- Use the keyword “fgz” (*not* “FGZ”)

Network type: Use “Infrastructure Mode” (not “Ad-hoc”)

Preamble mode: Long Tx preamble

Tx mode: 11 MB (“Automatic” will work on some cards, else hardcode to 11 Mb)

DHCP: Enabled

WEP / Encryption: Disabled

WEP Key: WEP is disabled

Radio Channel: Leave blank or set to “auto”

Most common reasons for being blocked

Unix/Linux/MAC users typically get blocked because of an unauthenticated ssh connection. Native ssh and telnet connections are not allowed. One must use ‘kerberized’ ssh or telnet to connect to a Fermilab system.

Also, systems must not allow unauthenticated ssh connections to their systems. Typically, MACs come configured with “Remote Access” checked under the Sharing folder. Other services such as ftp, etc. should also not be selected.

For those systems that have installed ssh, there may be an ssh_config file or an sshd_config file. Contained therein, is a line commented out containing Password Authentication, yes. The word “yes” needs to be changed to “no” (minus the quotes).

At startup, to prevent ssh processes from executing, enter the command -

```
/chkconfig --level 0123456 sshd off
```

To stop ssh from running, enter the command –

```
/etc/init.d/sshd stop
```

Note, to enter the above commands, one must be logged in as root.

If you’re running a Windows system and get blocked, either your system’s O/S and/or MS Office does not have the latest critically deemed patches, or attempts were made to connect to another system using a non-kerberized connection. Your local system Administrator or Helpdesk Staff member can assist you with how to establish a secure connection to another system complying with Fermilab’s Computer Security Policy.

What to do if you have been blocked

If it’s been determined that you have been blocked because of a computer security violation indicated from being assigned a 169.xx.xx.xx address or receive email indicating such, you will

have to remediate the event by following the web link contained in the email sent you. You may also seek assistance from a member of the Service Desk Staff.

The Service Desk Office is located on the ground floor of Wilson Hall in the E-mail Center. You may also call (630) 840-2345 for assistance. Office hours are Monday – Friday 8 a.m. until 4:30 p.m.

ATM Machine

An ATM machine is located outside the E-Mail Center on the Ground Floor, north end of Wilson Hall, across from the Argonne Credit Union.

Parking

Parking on site can be frustrating. While we have many parking spaces surrounding Wilson Hall, many along the building are restricted and one must have a parking permit in order to park in those spots.

We also have spaces that are marked as one hour or fifteen minute drop-off, as well as handicapped spaces. These spaces are well marked.

Overflow parking is available at the Lederman Science Center.

No-Smoking Policy at Fermilab

Please note that smoking is not permitted inside any building at Fermilab.

On-Site Transportation

Fermilab operates a free taxi service on site between the hours of 8:00 a.m. and 4:30 p.m., Monday through Friday. **There is no weekend service.** To call the taxi, dial 4225 (HACK) on any Laboratory phone. Please remember that the taxi stops at other locations to pick up and drop off passengers, so allow additional time when using this service.

Food Service

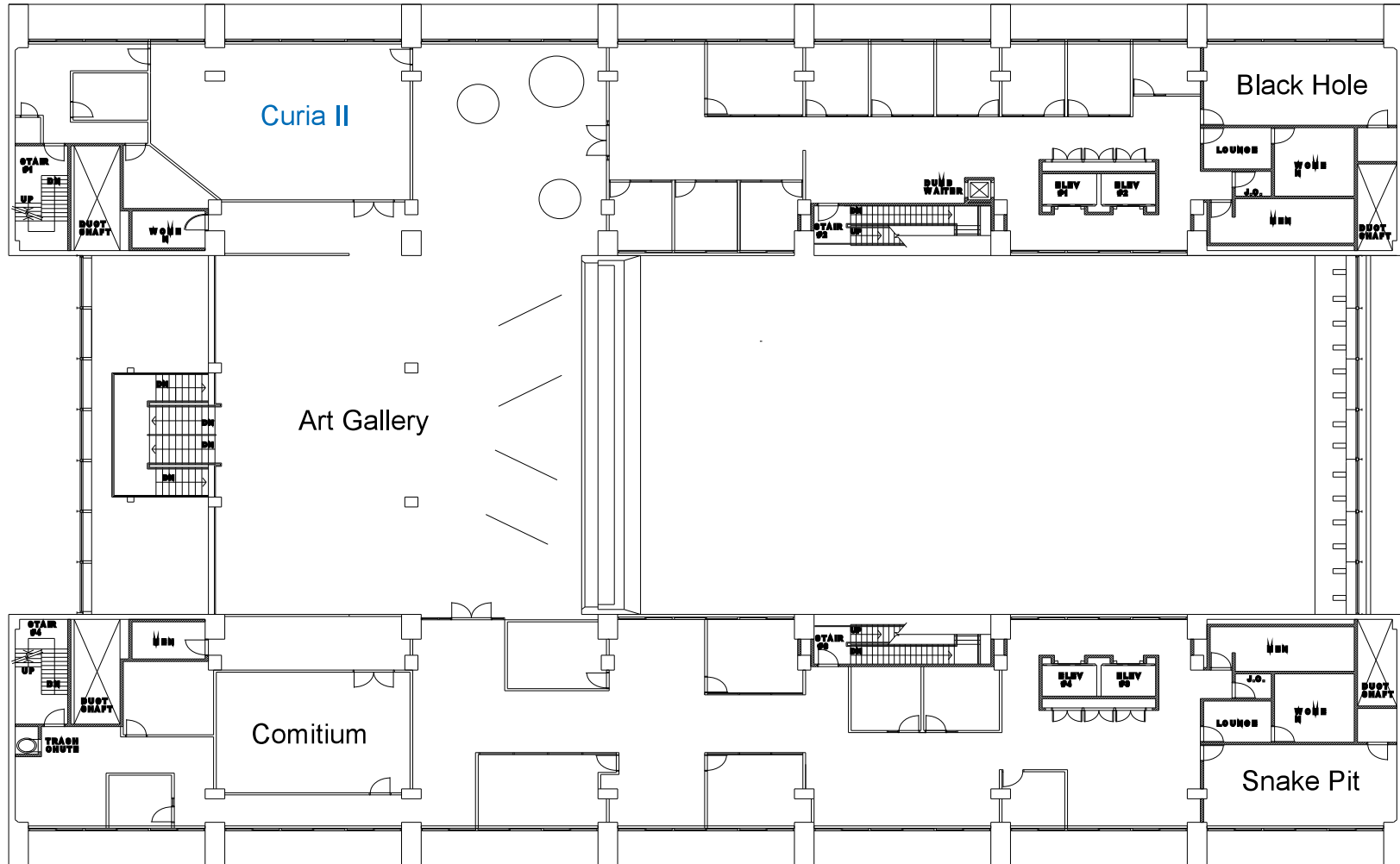
The Wilson Hall Café at Fermilab is open for breakfast and lunch, Monday through Saturday. There is no dinner service available in the Wilson Hall Café. The hours of operation during the week and on Saturday are as follows:

<i>Monday – Friday</i>			<i>Saturday</i>		
7:30 a.m.	- 10:15 a.m.	Breakfast	8:00 a.m.	- 10:15 a.m.	Breakfast
11:30 a.m.	- 1:30 p.m.	Lunch	11:30 a.m.	- 1:30 p.m.	Lunch
11:30 a.m.	- 2:00 p.m.	Salad Bar			
1:30 p.m.	- 4:00 p.m.	Snack Service			<i>Closed Sunday</i>

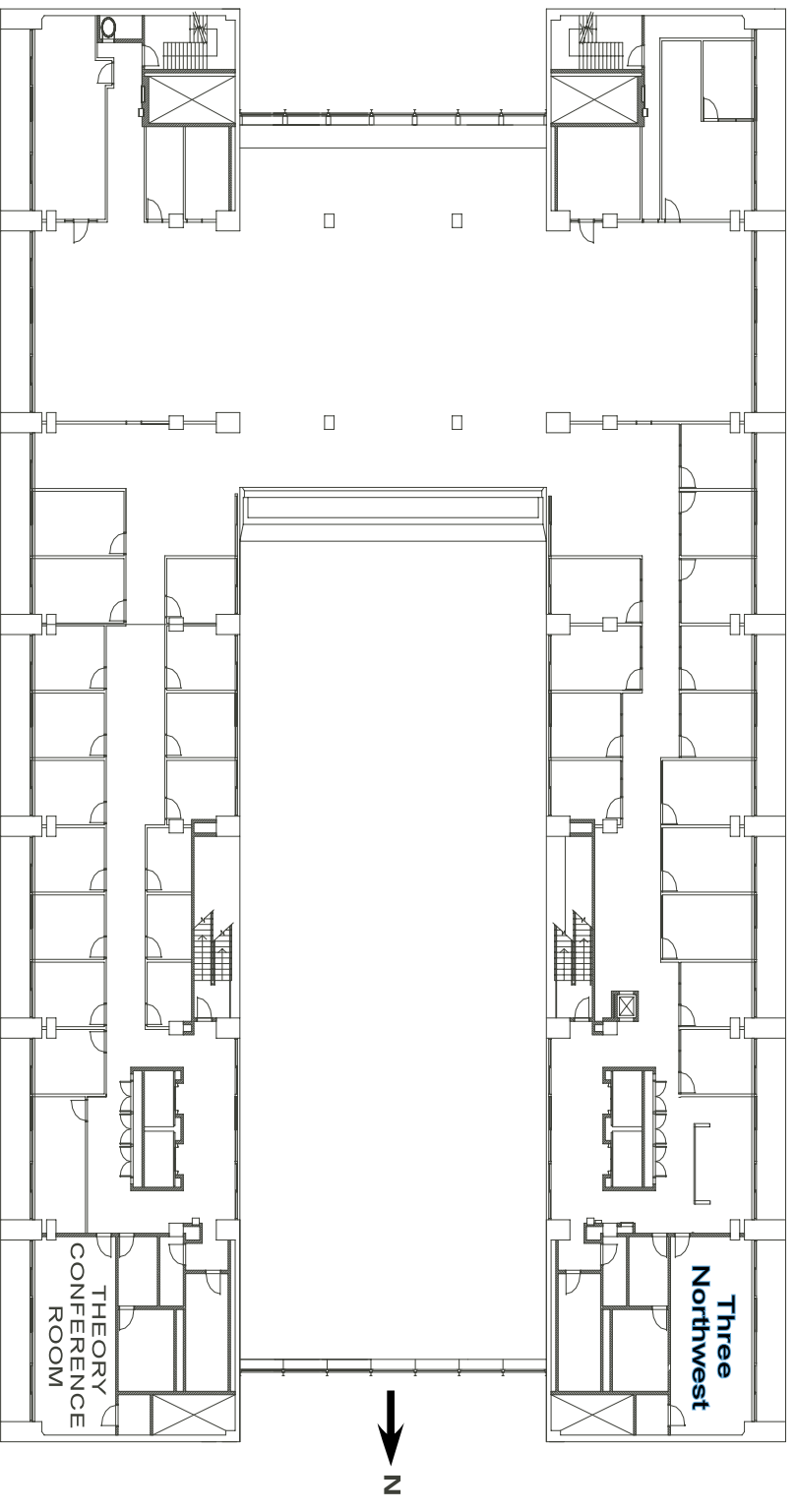
Users Center

The Users Center is located at 10 Che Che Piqua in the Village. It is a recreational facility containing a large-screen TV room, a music room with a grand piano, a game room with ping-pong tables and pool tables, and a lounge with a full bar. The Users Center is open Monday through Friday from 5:00 p.m. to midnight.

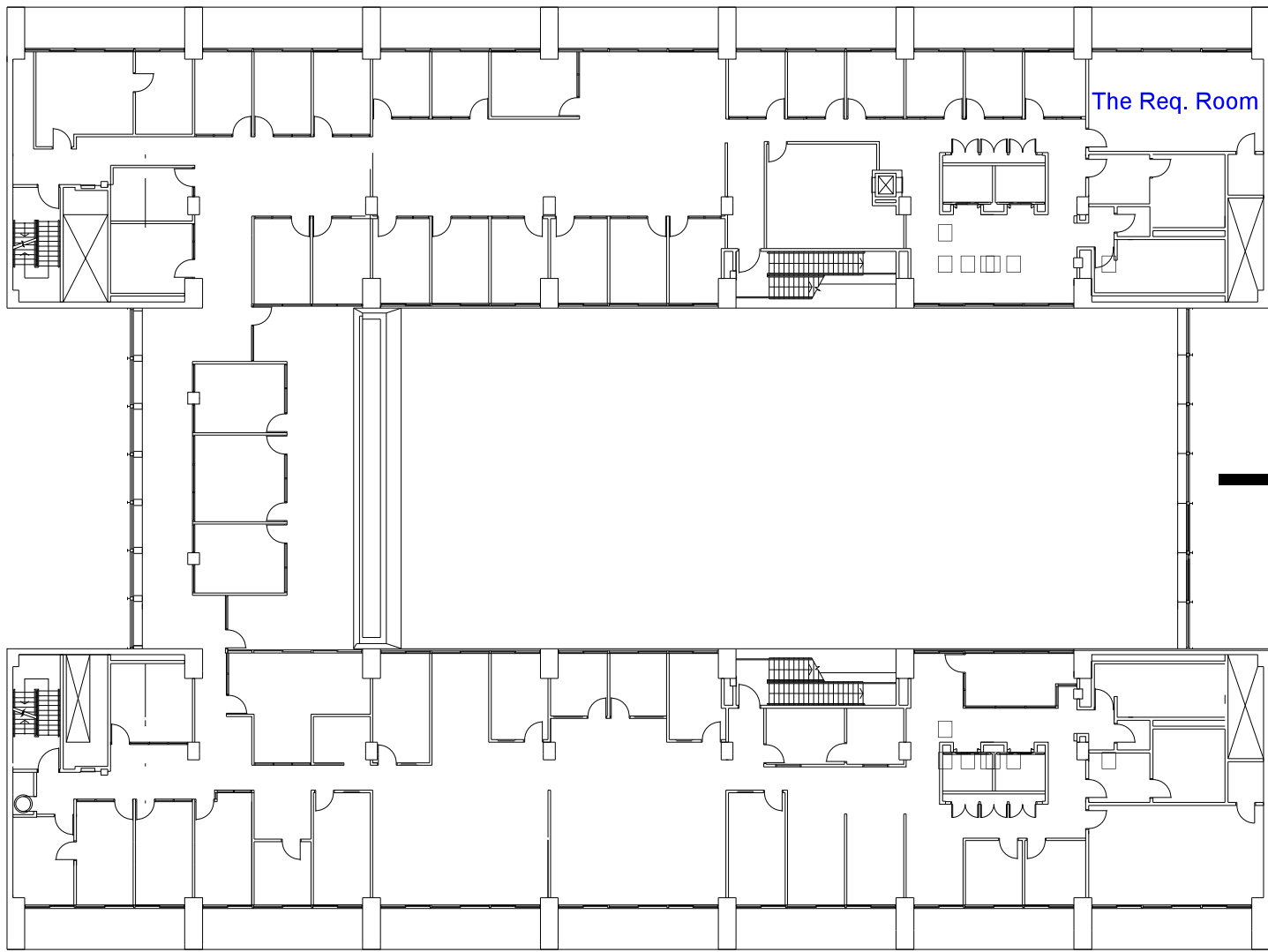
Wilson Hall 2nd Floor Curia II



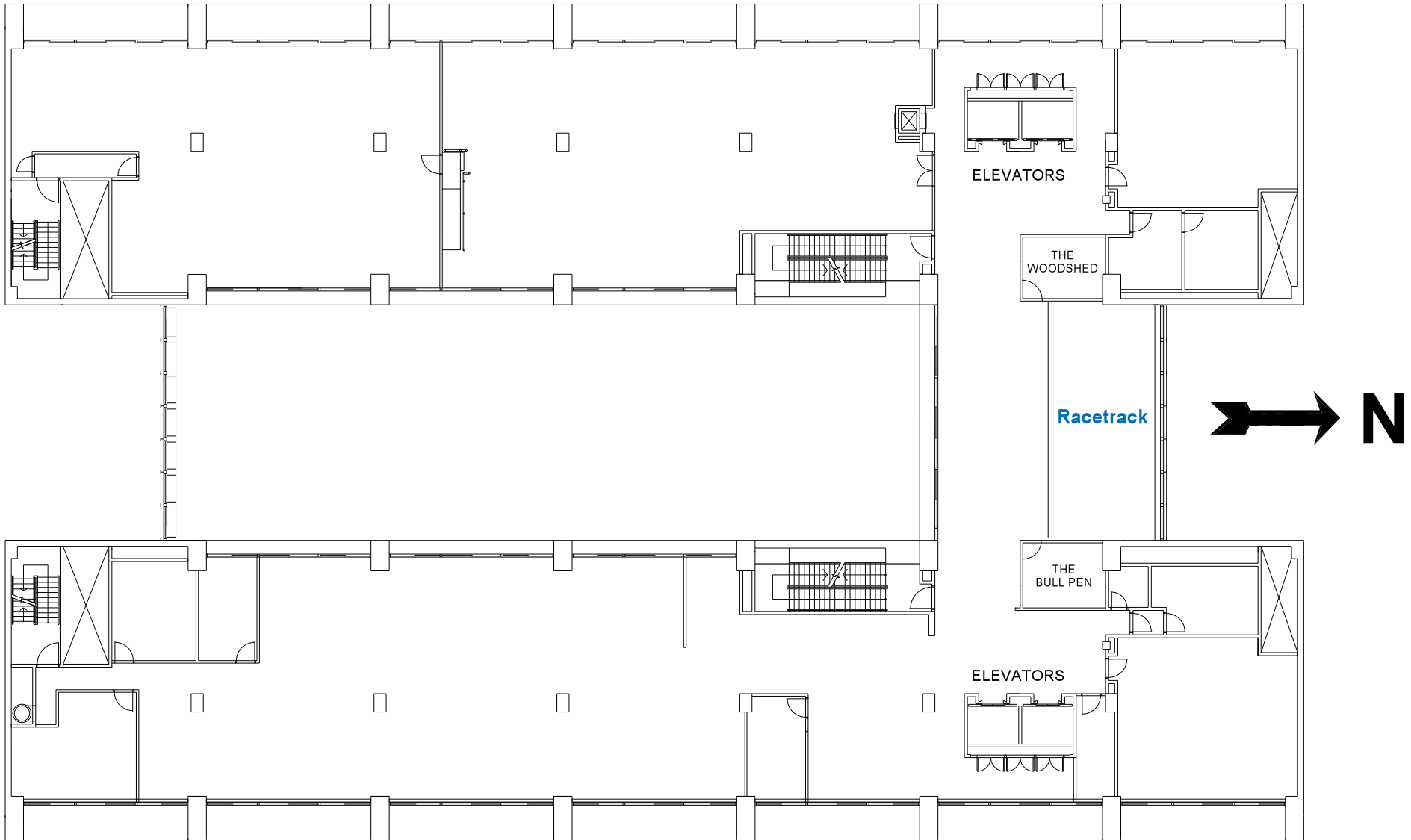
**Wilson Hall 3rd Floor
Three Northwest Conference Room**



Wilson Hall 4th Floor The Req. Room



Wilson Hall 7th Floor Racetrack



Wilson Hall 8th Floor Hornet's Nest

